

Continental Access

A Napco Security Group Company



CardAccess 3000 Server Upgrade V2.9.x

Very Important: This document is to be used on an upgrade from version 2.6.x, 2.7.x or V2.8.x. If upgrading from V2.5.16 or earlier, refer to the Important Information on page 1.

REVISION: Rev A

DATE: 08/29/2012



DISCLAIMER

Continental Instruments LLC makes no representations or warranties with respect to the contents hereof and specifically disclaim any implied warranties of merchantability or fitness for any particular purpose. Further, Continental Instruments LLC reserves the right to revise this publication and to make changes from time to time in the content hereof without obligation of Continental Instruments LLC to notify any person of such revision or changes.

Copyright © 2012 by Continental Instruments LLC. All rights reserved. No part of this publication may be reproduced, transmitted, transcribed, or stored in a retrieval system, without the prior written permission of Continental Instruments LLC, 355 Bayview Avenue, Amityville, NY 11701. Telephone: 631-842-9400 • FAX: 631-842-9135 • GSA# GS-07F-0039H.

This document contains proprietary information of NAPCO Security Technologies. Unauthorized reproduction of any portion of this manual without the written authorization of NAPCO Security Technologies is prohibited. The information in this manual is for informational purposes only. It is subject to change without notice. Companies, names and data used in examples herein are fictitious unless otherwise noted. NAPCO Security Technologies assumes no responsibility for incorrect information this manual may contain.

A NAPCO SECURITY TECHNOLOGIES COMPANY

Publicly traded on NASDAQ Symbol: NSSC

Visit our websites at

<http://www.cicaccess.com/>

<http://www.napcosecurity.com/>

<http://www.alarmlock.com/>

Table of Contents

Important Information - Must Read Prior To Starting Installation	1
Computer Specifications	2
Scope / CardAccess 3000 Server Upgrade	3
Database Update	11
Readme	13

Important Information - Must be read before installing software.

- 1) This document pertains to a CardAccess 3000 Server upgrade from V2.6.x, V2.7.x or V2.8.x.

VERY IMPORTANT- If upgrading from V2.5.16 or earlier, you must upgrade to V2.6 first, and then upgrade to V2.9.x. If V2.6 is not available, please contact Continental Technical Support to arrange an upgrade.

- 2) Verify you have a physical security key or a software license for CardAccess 3000 V2.9.x. Security keys and software licenses from previous versions of CardAccess 3000 (ex. V2.6, V2.7, V2.8) are not compatible with V2.9.x. **VERY IMPORTANT:** The security key or software license must be placed on the CardAccess 3000 server/host computer, not the workstation.
- 3) If Badging 3000 (EPI) is currently licensed and installed on the computer being upgrading, **DO NOT REVOKE THE EPI LICENSES OR REMOVE THE BADGING 3000 SOFTWARE.** If you are installing Badging 3000 for the first time, it is recommended to install it on a CardAccess 3000 workstation.
- 4) Before upgrading, refer to the CardAccess 3000 V2.9.x computer specifications to determine if the computer meets the specifications.
- 5) It is highly recommended to backup the databases before performing an upgrade.
- 6) Prior to performing the upgrade, verify you have **FULL ADMINISTRATOR** rights on the computer.

CA3000 V2.9.x Server/Host PC Recommendations REV A

	Server (1-4 Workstations)	Server (5-19 Workstations)	Server (20-49 Workstations)
Processor	Pentium Dual Core, 2.6GHz (min)	Xeon Quad Core 2.0GHz (min)	2 x Xeon Quad Core 2.0GHz (min)
Ram	2.0 GB Min/ 3GB+ for Win7 and Win Server 2008 R2	4.0 GB Min	8 GB Min
Hard Drive	300 GB	500 GB	Raid 5 - 3 drives minimum
USB Ports	4 Min	4 Min	4 Min
Serial Ports	Optional - 1 expandable to 64	Optional - 1 expandable to 128	Optional - 1 expandable to 128
Parallel Ports	Optional - 1	Optional - 1	Optional - 1
Mouse	PS2 or USB	PS2 or USB	PS2 or USB
Monitor	17" SVGA (1024x768)	17" SVGA (1024x768)	17" SVGA (1024x768)
DVDROM	48x/16x	48x/16x	48x/16x
DVDR	24x/8x	24x/8x	24x/8x
Sound	Optional but Stand-Alone recommended	Optional	Optional
Network Card	100/1000 Mb NIC Ethernet	100/1000 Mb NIC Ethernet	100/1000 Mb NIC Ethernet
Operating System	Win XP Pro w/SP3, Win 7 Pro w/ SP1 32/64 bit, Win 2003 Server R2 w/SP2 32/64 bit or Win 2008 Server R2 w/SP2	Win XP Pro w/SP3, Win 7 Pro w/ SP1 32/64 bit, Win 2003 Server R2 w/SP2 32/64 bit or Win 2008 Server R2 w/SP2	Win XP Pro w/SP3, Win 7 Pro w/ SP1 32/64 bit, Win 2003 Server R2 w/SP2 32/64 bit or Win 2008 Server R2 w/SP2
Database	MSSQL 2005/2008 R2 Express or MSSQL Server 2005/2008 R2 for higher performance	MSSQL Server 2005/2008 R2 recommended	MSSQL Server 2005/2008 R2 recommended
Backup	Tape / CD / DVD / Network	Tape / CD / DVD / Network	Tape / CD / DVD / Network
System Size	This is the recommended PC server specification for a system with up to four workstations. It can be used for a stand-alone system, a workstation or a CA3000 Server. For high transaction environments some specifications may change.	This is the recommended PC specification for a CA3000 Server supporting up to nineteen workstations. For high transaction environments some specifications may change.	This is the recommended PC specification for a CA3000 Server supporting up to forty nine workstations. For high transaction environments some specifications may change. For larger systems please consult with Continental Access.
Notes:	(1) If using SQLExpress, the database size should not exceed 4GB. (2) Disk drive usage is dependent on the number of transactions kept in backup. (3) Additional RAM will improve performance (4) It is best to perform badging and other integration functions on a workstation, not the server.		

Salient Analog Capture cards are not supported on 64 bit operating systems. Other than a small Stand-Alone system, Continental Access does not recommend running Photo-badging, DVR/NVR Integration, Napco Integration, Scripting, or Dynamic Maps from a Host machine.

Scope

This document contains information regarding the upgrade to CardAccess 3000 V2.9.x, from V2.6.x, V2.7.x or V2.8.x. It is to be used on a CardAccess 3000 Server/Host upgrade. If Badging3000 (EPI) is currently installed and licensed on the computer being upgrading, **Do Not** revoke the EPI licenses and do not remove the Badging3000 software. It is highly recommended to run Badging3000 (EPI) on a CardAccess 3000 workstation.

VERY IMPORTANT: The screenshots in this document are for a CardAccess 3000 upgrade on a **Windows 7 – 64 bit computer**. The following screenshots will vary if the installation is being performed on a 32 bit computer or another supported operating system.

CardAccess 3000 Server Upgrade

If auto start is enabled on your system, the **Auto Play** screen will display after inserting the CA3000 DVD in the DVD drive (Refer to Figure 1). Click **“Run Launch.exe”**. Verify the **CardAccess 3000 Version 2.9 Setup** screen displays (refer to figure 3). Skip ahead to the steps following Figure 3.

Warning: If auto start is not enabled on your system, nothing will occur after inserting the CA3000 DVD. Follow the steps below to execute the program.

Click the **Start** menu on your PC. In the **Search Programs and Files** box, type **d:\launch.exe** (Refer to Figure 2). After pressing ENTER, the **CardAccess 3000 Version 2.9 setup** screen will display (Refer to Figure 3).

Note: “d:” represents the DVD drive letter. This letter will be different depending on the drive letter of your DVD drive.



Figure 1.



Figure 2.



Figure 3.

Click on the **Install CardAccess 3000** button. The CardAccess 3000 Prerequisites will be installed if they are not currently on the computer. While performing an upgrade, most of the prerequisites will already be installed.

Prerequisites

NOTES:

- There can be up to seven prerequisites required to be installed. Older supported operating systems require more prerequisites to be installed (refer to figure 4).
- Prior to this upgrade, this computer already contained the “Microsoft .NET Framework 4.0”, “ADH Source Filter for Direct Show” and “Visual C++ Runtime Libraries”. These do not have to be installed and will not be listed in the prerequisites box. If these or other prerequisites need to be installed, follow the prompts and click **Install** on each.
- During the installation of the prerequisites, the computer might require a reboot. If you are prompted to reboot, click **Yes** or **OK** (Refer to figure 6). After the computer reboots, the CardAccess 3000 setup program must be restarted again (Refer to figures 1, 2, and 3).

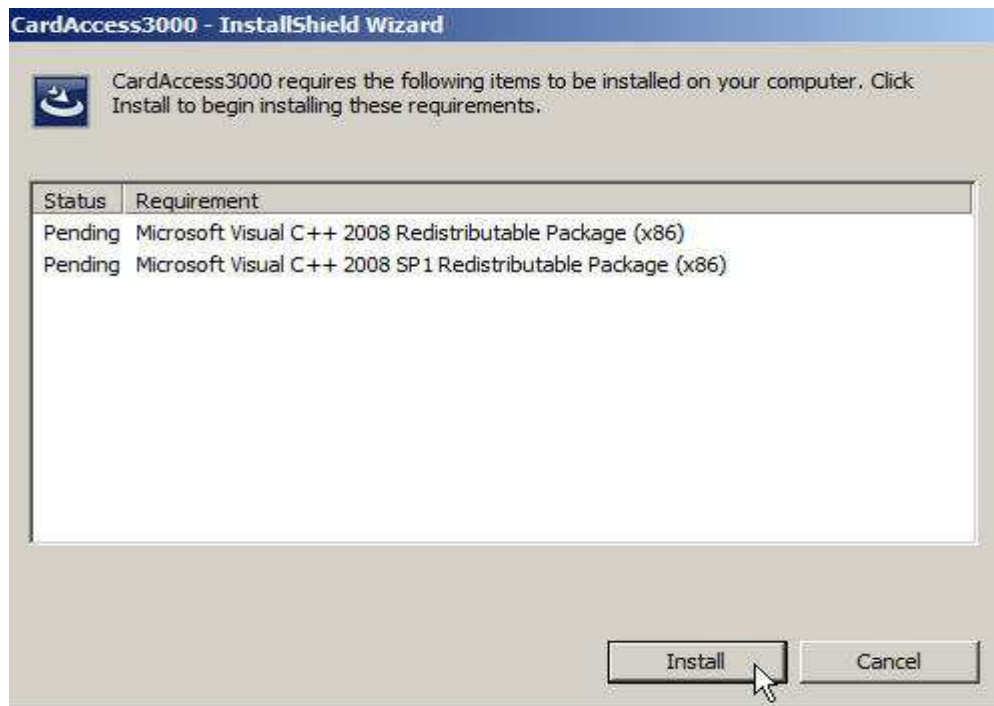


Figure 4.

Click **Install**. After clicking **Install**, a progress bar will display while the prerequisites are being installed (Refer to figure 5).

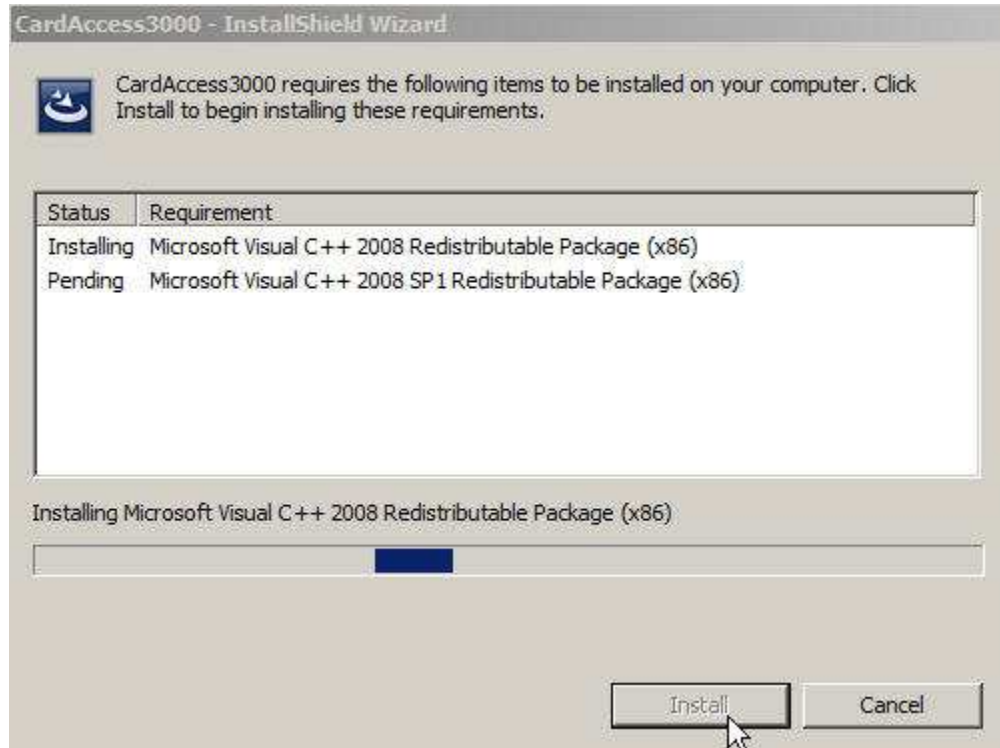


Figure 5.

During the installation of the prerequisites, a message will display at various times stating the setup must manually be restarted (refer to figure 6).

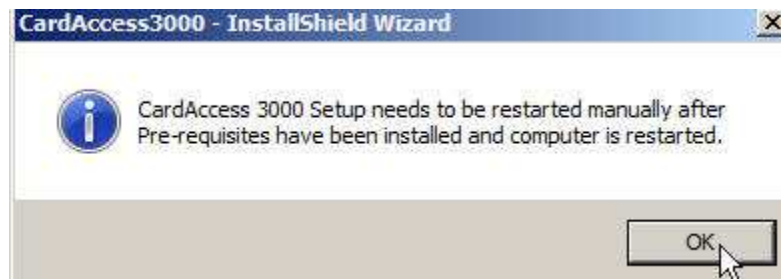


Figure 6.

Click **OK**, CardAccess 3000 Setup Type screen will display (refer to figure 7).

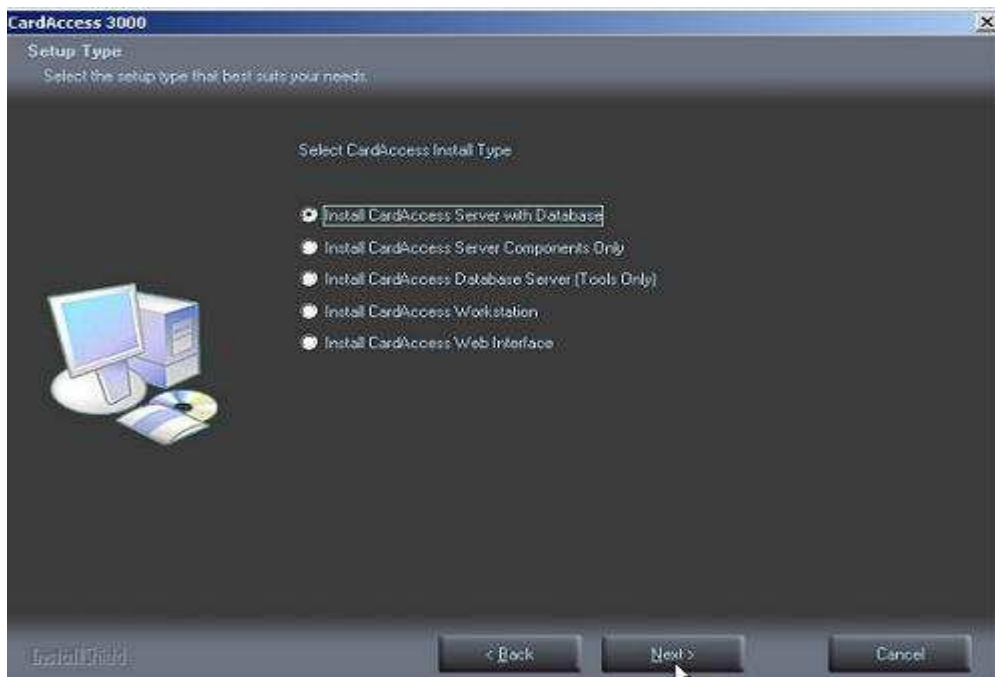


Figure 7.

will Select **Install CardAccess Server with Database**. Click **Next**, the **Destination Folder** path display (Refer to figure 8).

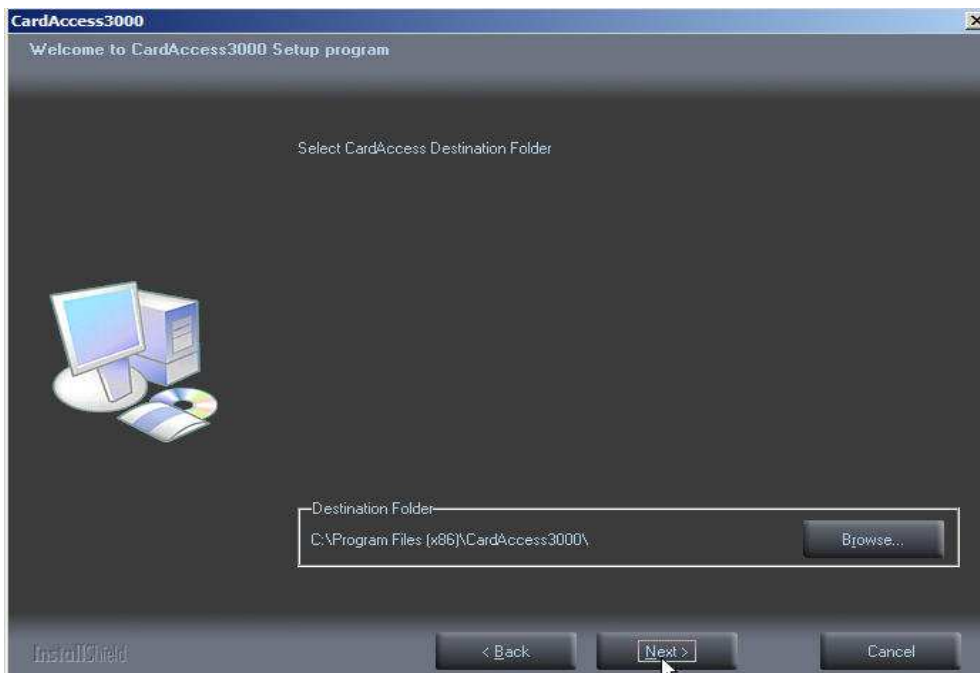


Figure 8.

Click **Next**, the **Select Additional Components** screen will display (Refer to figure 9).

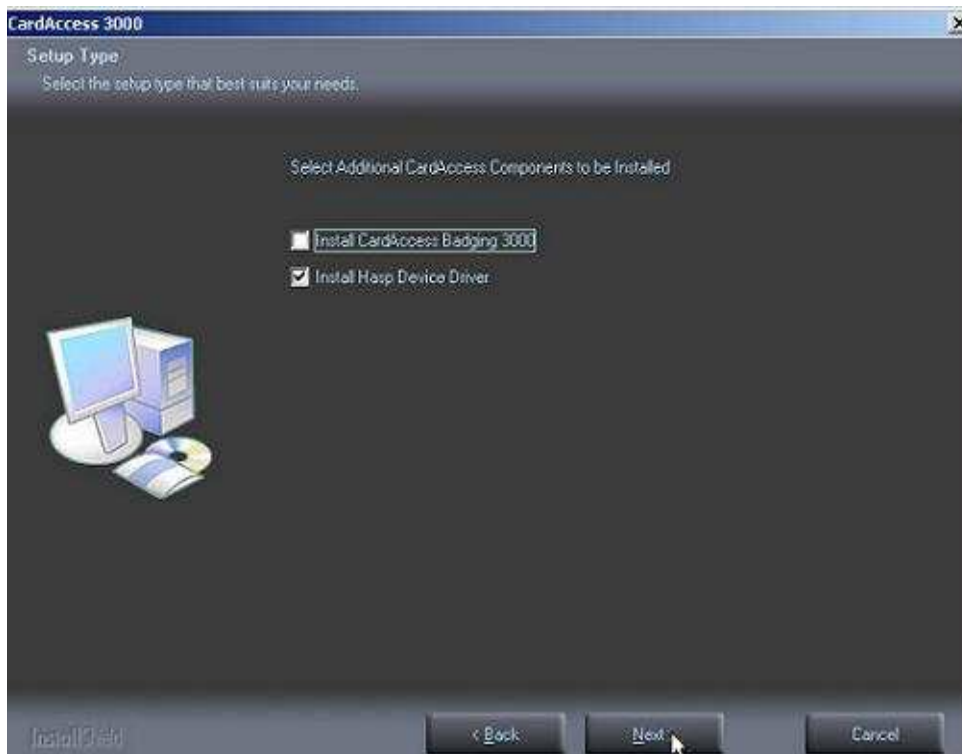


Figure 9.

By default, the **Install Hasp Device Driver** is selected. Click **Next**. The **Current Settings** screen will display (Refer to figure 10).

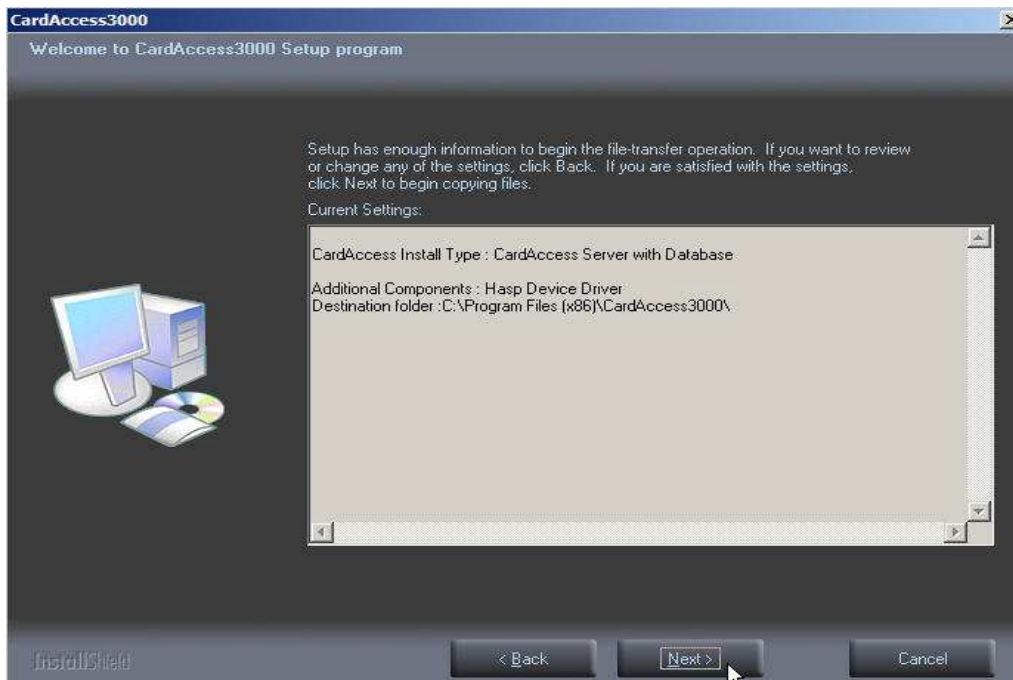


Figure 10.

Click **Next**. A command window will display momentarily while the services are stopped. After the services are stopped successfully, a progress bar will display while the CardAccess 3000 is installing (Refer to figure 11 and 12).

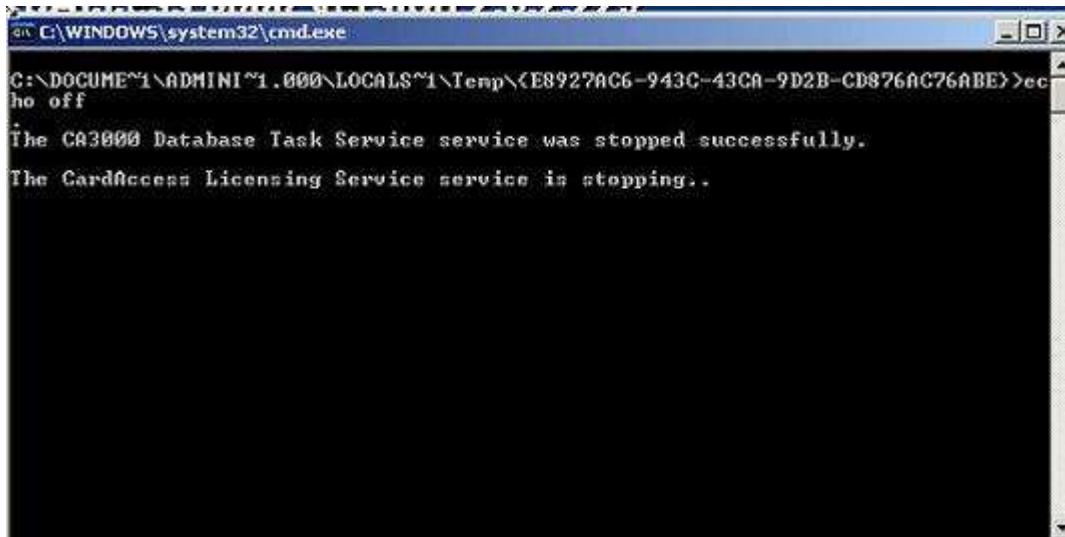


Figure 11.

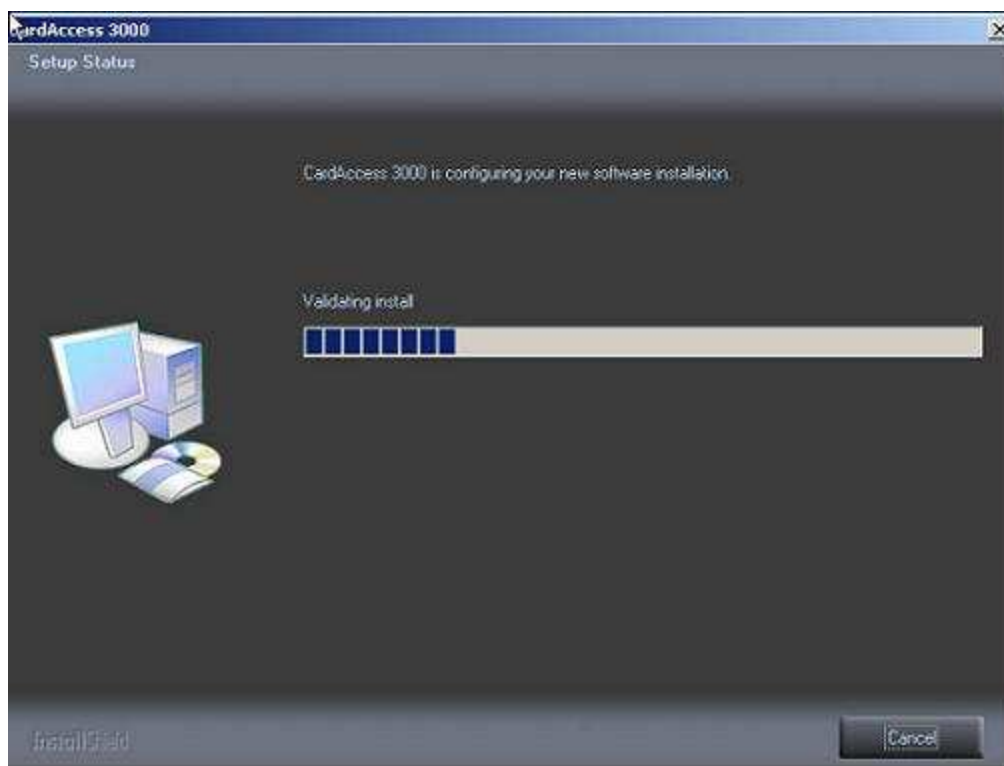


Figure 12.

After the completion of the CardAccess 3000 setup configuration, the **Setup is installing the Hasp Device Driver** screen will display (Refer to figure 13).

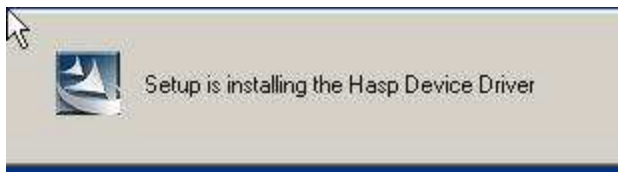


Figure 13.

After the completion of the Hasp Device Driver Installation, the **Setup is Creating new/update existing CardAccess database** screen displays (Refer to figure 14 and 15).

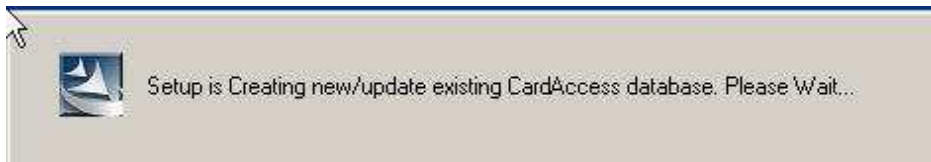


Figure 14.

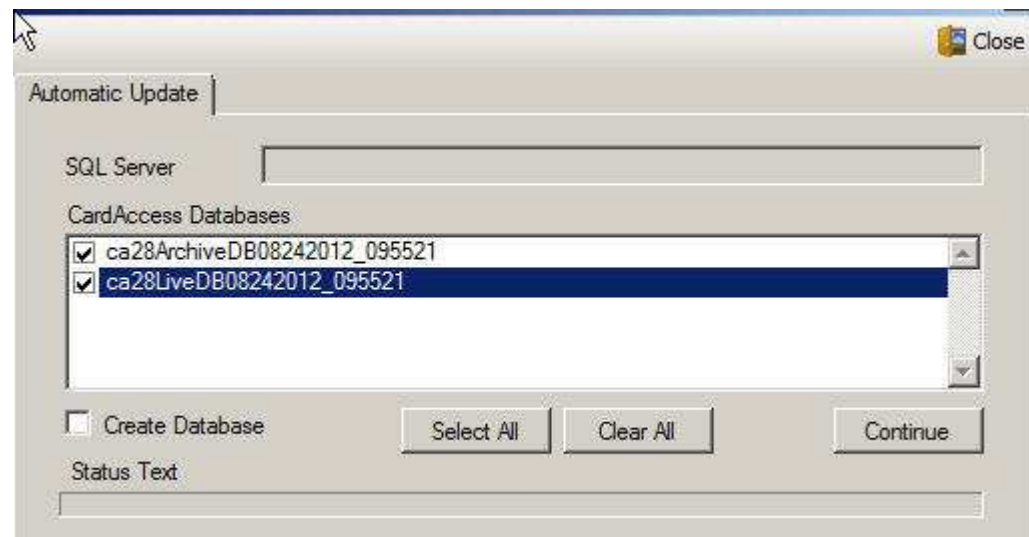


Figure 15.

Select the database(s) you wish to update.

Click **Continue**. A **Database Update Warning** screen will display (refer to figure 16).



Figure 16.

After reading and acknowledging the terms of the **Warning**, click **Yes**, the **CardAccess 3000 Password** screen displays (refer to figure 17).



Figure 17.

Click **OK**. The database(s) selected will be updated. A progress bar will display while updating database(s).

At the completion of the **Automatic Database Update** the **Readme Information** screen will display. **VERY IMPORTANT:** It is very important to read the Readme information for important setup information and know issues (Refer to Figure 18).

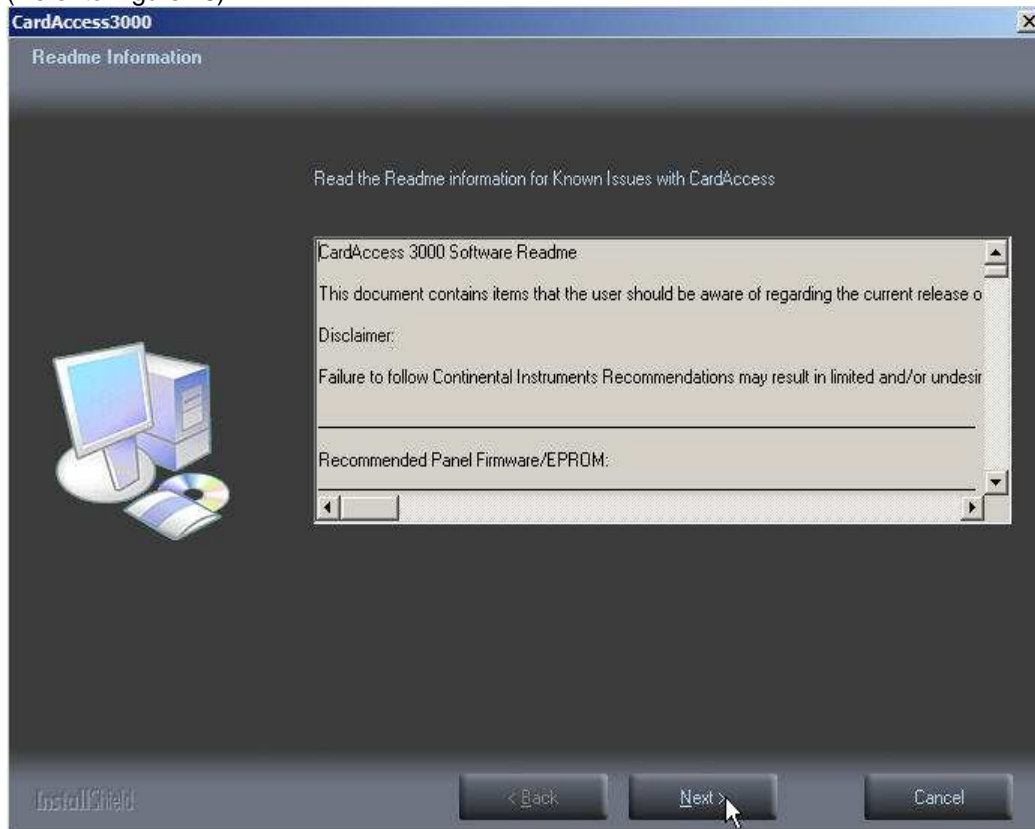


Figure 18.

After reviewing the Readme Information, Click **Next**. The **InstallShield Wizard Complete** screen will display (Refer to Figure 19).

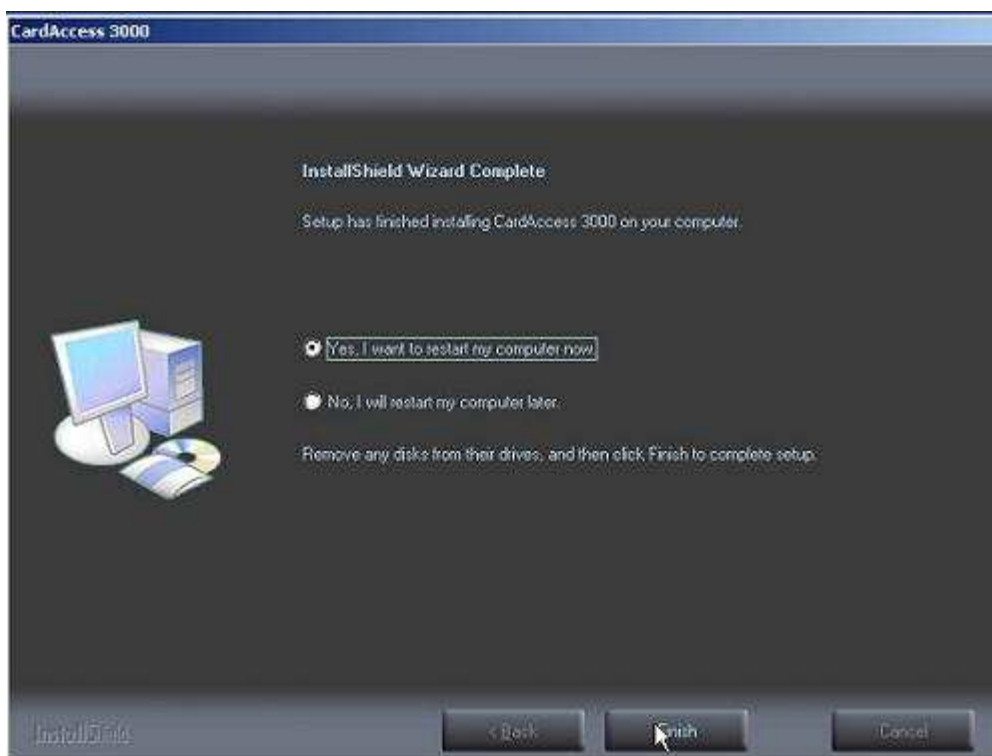


Figure 19.

Verify the **Yes, I want to restart my computer now** option is selected. This should be selected by default. Click **Finish**. The computer will restart.

After the computer reboots, the CardAccess 3000 license manager screen will display. If you purchased a physical USB security key, close this screen. If you were supplied a .license file for version 2.9 software license, you must Import, Activate and Register the software license.

If you have a physical security key, you will need to install it before launching the CardAccess 3000 (after inserting the security key into the USB port, you should see a "New hardware has been detected" message display).

The CardAccess Server upgrade is now complete.